

User Manual

AUDI Carplay MMI BOX

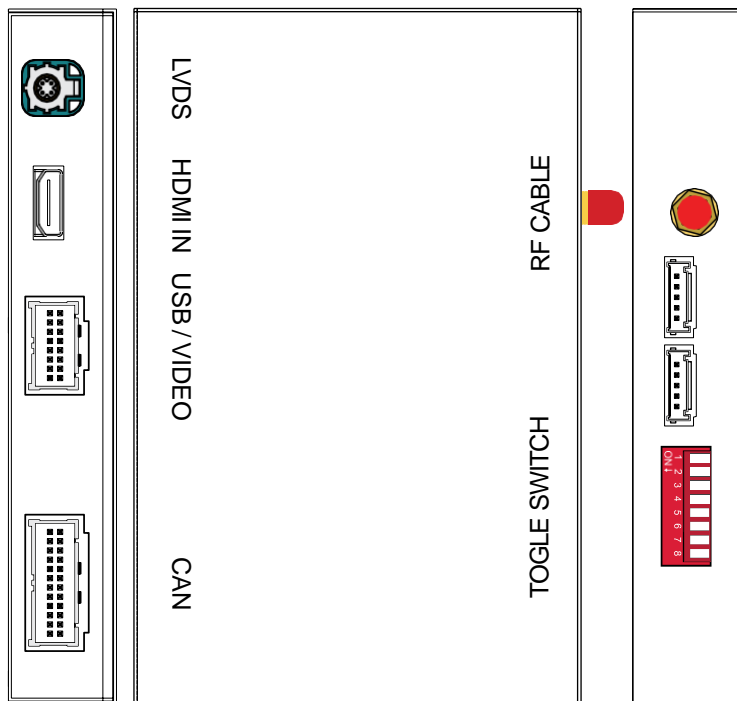


Apple CarPlay



Android AUTO

Specifications



Panel description

CAN Power	For power cable connection, CAN data transmission
Antenna	Wifi antenna connector
USB Camera	USB data transmission, and for reverse/front camera connection
LVDS OUT	Connect with cable labeled 'LVDS-OUT-CIC'
LVDS IN	Connect with cable labeled 'LVDS-CIC-C19'
Toggle switch	Refer DIP code setting to set for different car models
360 IN	Exterior 360 input (VGA signal input)

Input	USB/CVBS signal input
Input Voltage	12-16V DC
Rated Current	2A
Rated Power	24W
Control	Voice /iDrive control
Material	Housing aluminum

Features

- >Support wireless/wired Carplay function
- >Support wireless/wired Android auto function
- >Support wireless Airplay function
- >Support wired Autolink function
- >Compatible with OEM and external microphone
- >Support EQ adjustment, lossless sound quality
- >Support HDMI input
- >Support USB to play audio and video, support firmware upgrade
- >Keep the OEM system function, reversing radar and track display

Accessories



LVDS-CPCAR1702C-All



AV-USB-GP68



Antenna

Main harness for different car models



Main Harness
CAN-GPX11701-A6



Main Harness
CAN-GPX11701-A7C



Main Harness
CAN-GPX11701-A8



Main Harness
CAN-GPX11701-Q3S



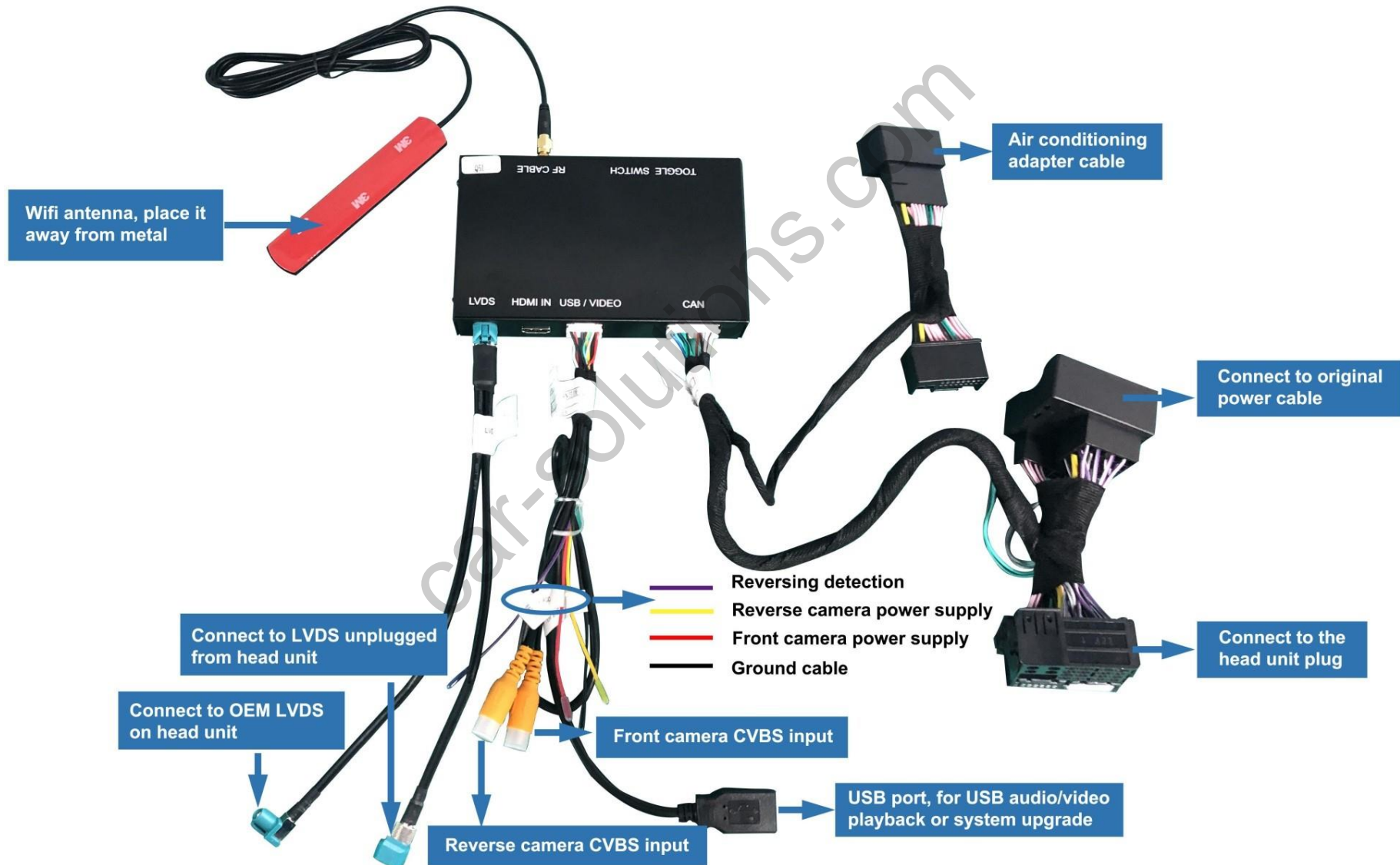
Main Harness
CAN-GPX11701-Q5U

DIP Switch setting

Configuration	Audi model	Year	DIP switch	
			1-6	7-8
With MMI	A1	2013-2018	001100	
	A3(6.3 inch)	2014-2016	110011	
	A3(7 inch)	2014-2016	111001	<p>Pin7: With OEM parking sensor → OFF/0 No OEM parking sensor → ON/1</p> <p>Pin8: With OEM Bluetooth → OFF/0 No OEM bluetooth → ON/1</p>
	A3(7/8.3 inch)	2017-2018	111000	
	A4/A5	2010-2011	000111	
	A4/A5	2012-2016	000000	
	A4L/A5(7/8.3 inch)	2014-2019	110100	
	A6	2010-2011	001101	
	A6/A7	2012-2016	000000	
	A6/A7(MIB2)	2016-2018	001111	
	A8	2012-2018	000001	
	Q2L(7/8.3 inch)	2019	111000	
	Q3	2014-2018	001100	
	Q5	2010-2012	000111	
	Q5	2013-2018	000000	
	Q5(7/8.3 inch)	2018-2019	111011	
	Q7	2010-2015	000010	
	Q7(7 inch)	2016-2018	111011	
	Q7(8.3 inch)	2016-2019	110100	
NO MMI	A4/A5/Q5(6.3 inch)	2009-2018	000101	

Connection Diagram

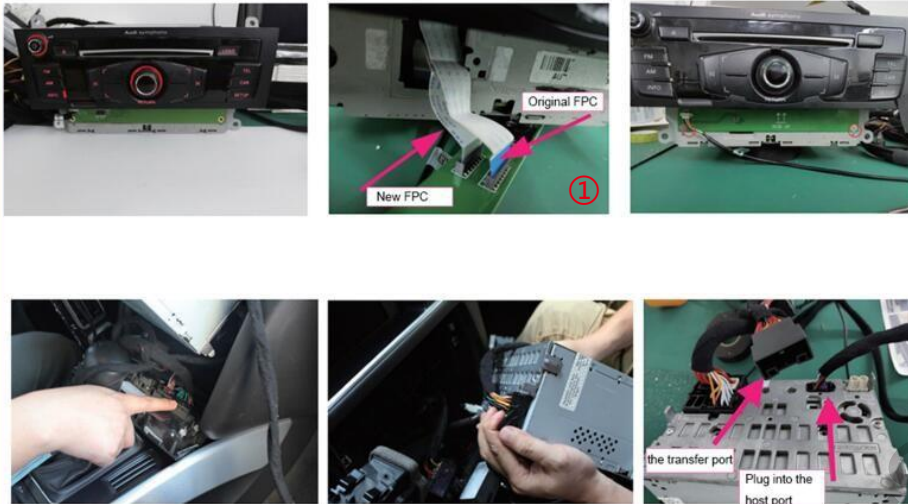
Carplay connection for A3/A4/A5/Q5



Connection for A4/A5/Q5 NO MMI

FPC connection

- Note: 1. Transfer panel button cable, fix the transfer board with original car screws after connection
2. Power needs to be disconnected during installation.



Complete the transfer of air conditioning panel

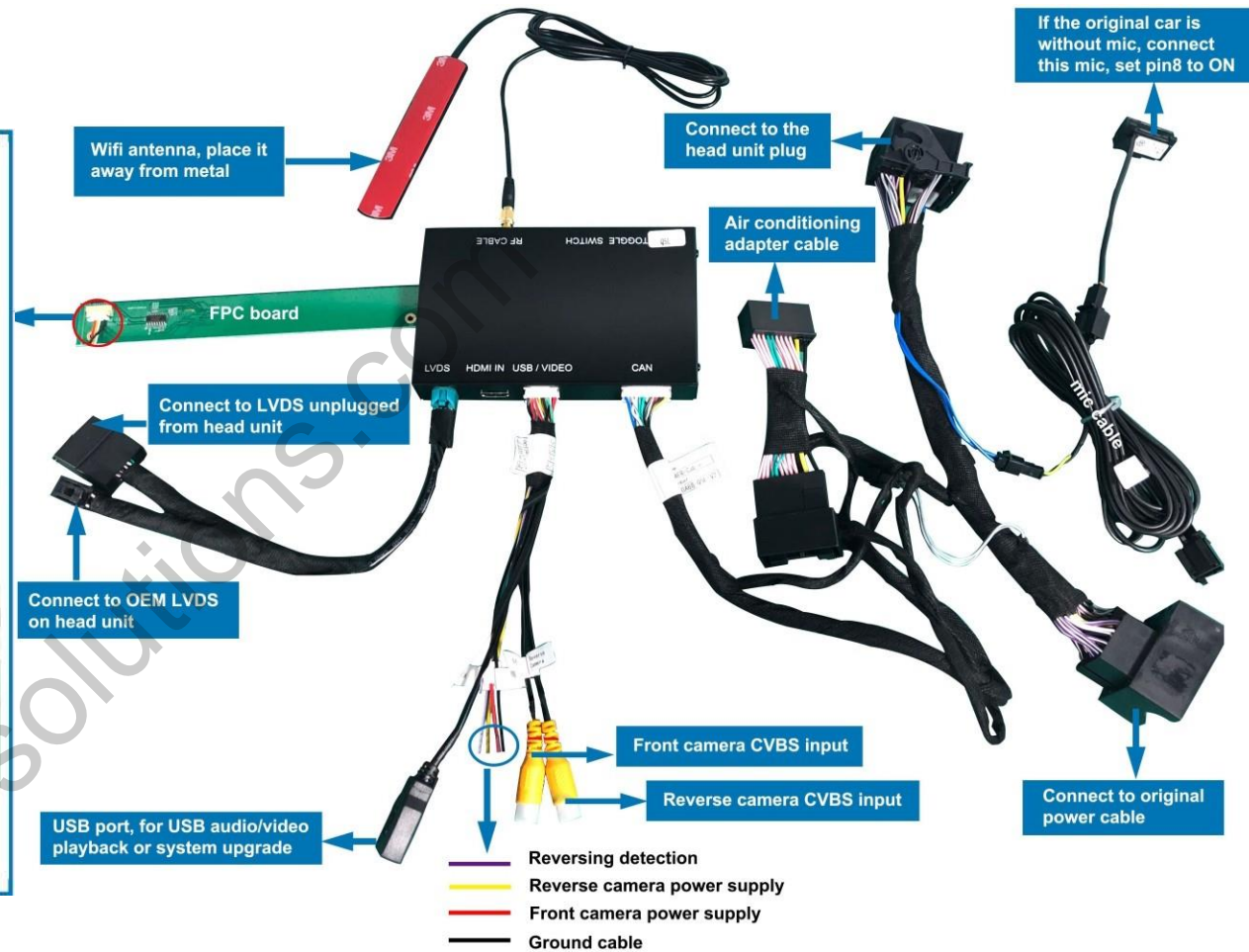
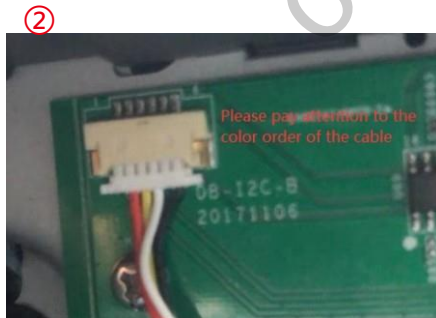
Unplug the power of the host

the transfer port

Plug into the host port



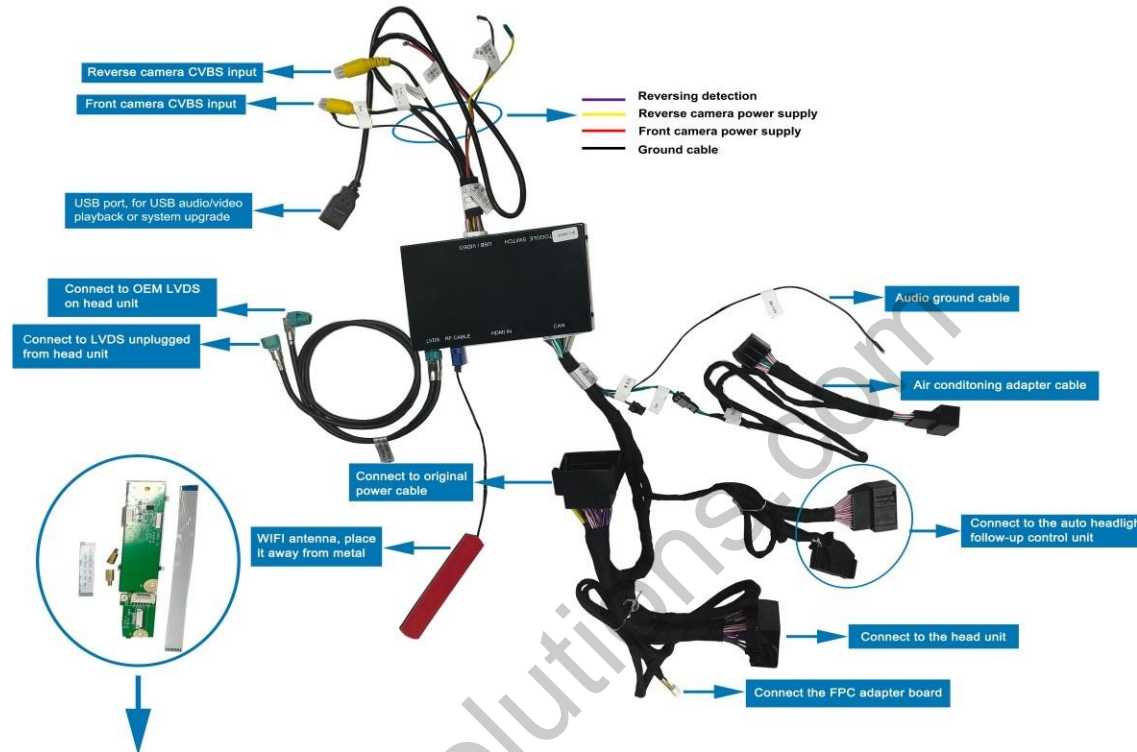
support@car-solutions.com



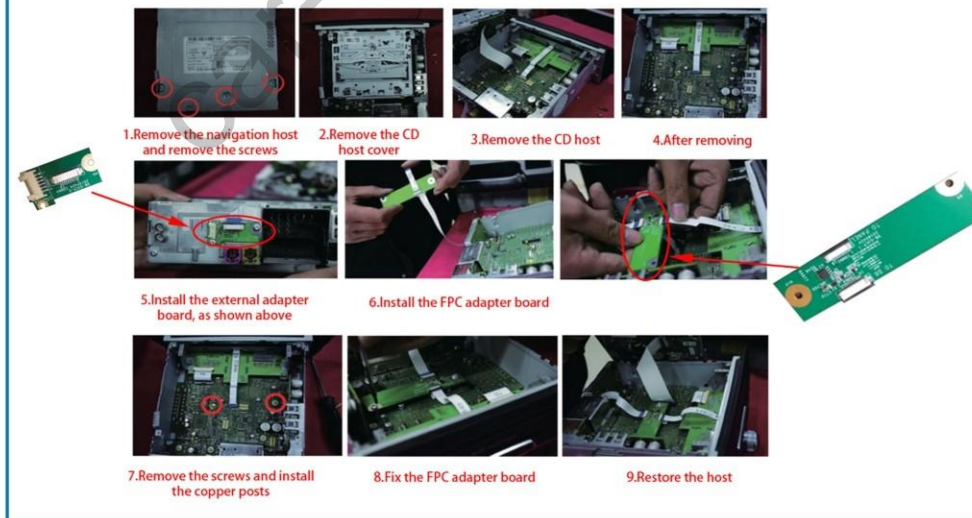
Note:

1. The area that is marked by blue color can't be bent or broken, which probably has effect on the original car system, can't boot. (Fig1)
2. Pay attention to the direction of FPC while plugged in slots as the show in pics. (Fig 2)

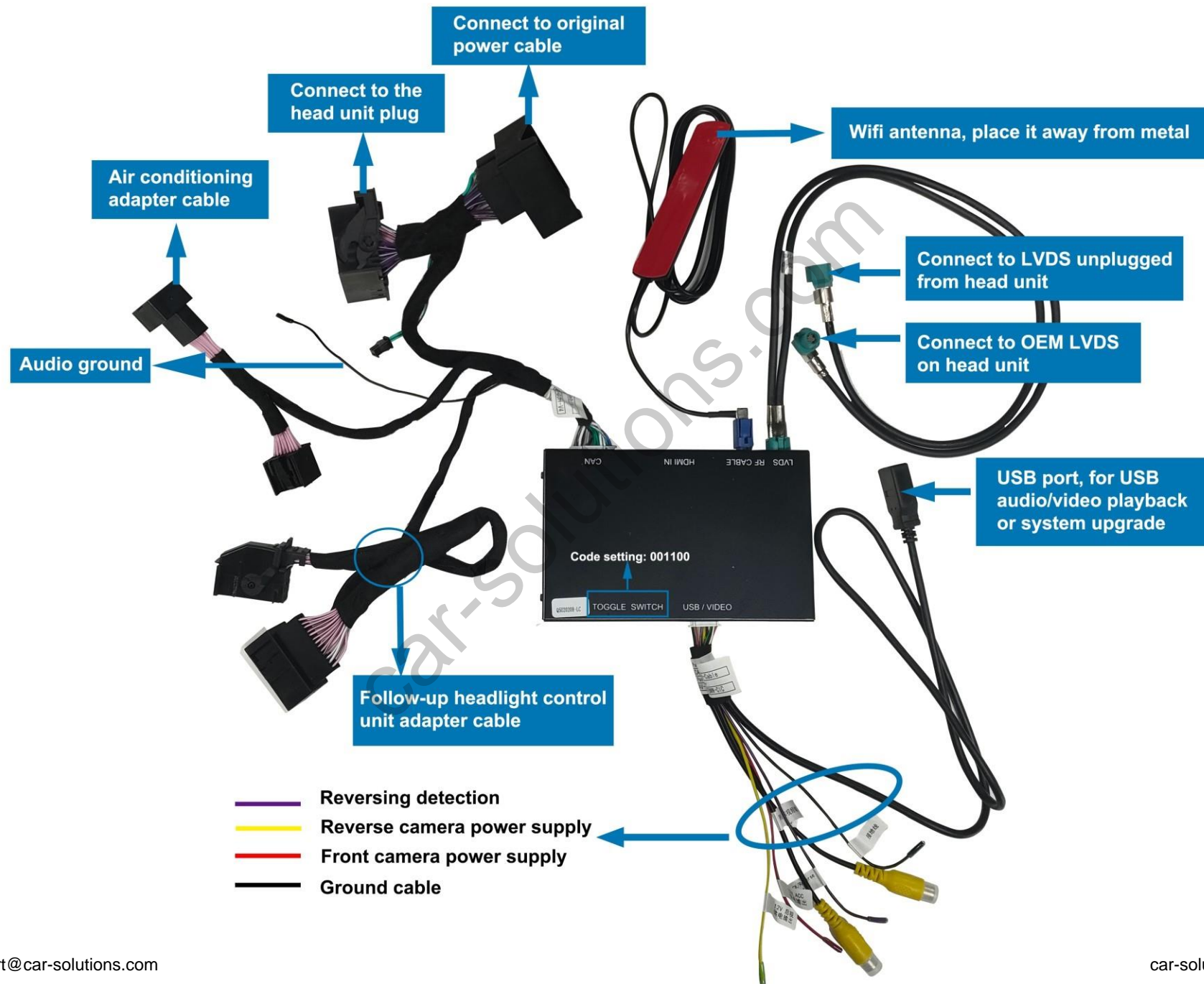
Connection for Q3 without navi



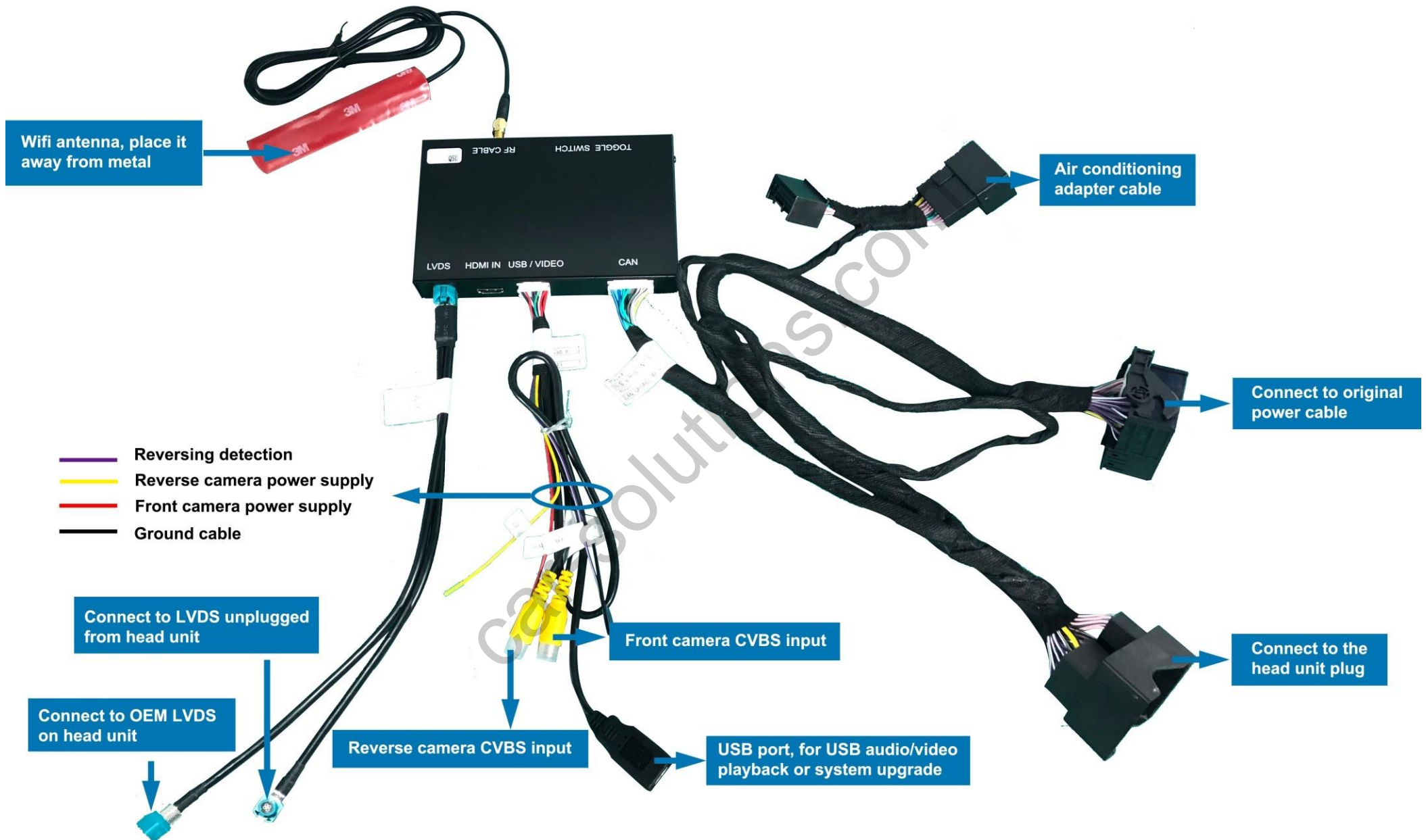
Q3 FPC Adapter Board Installation



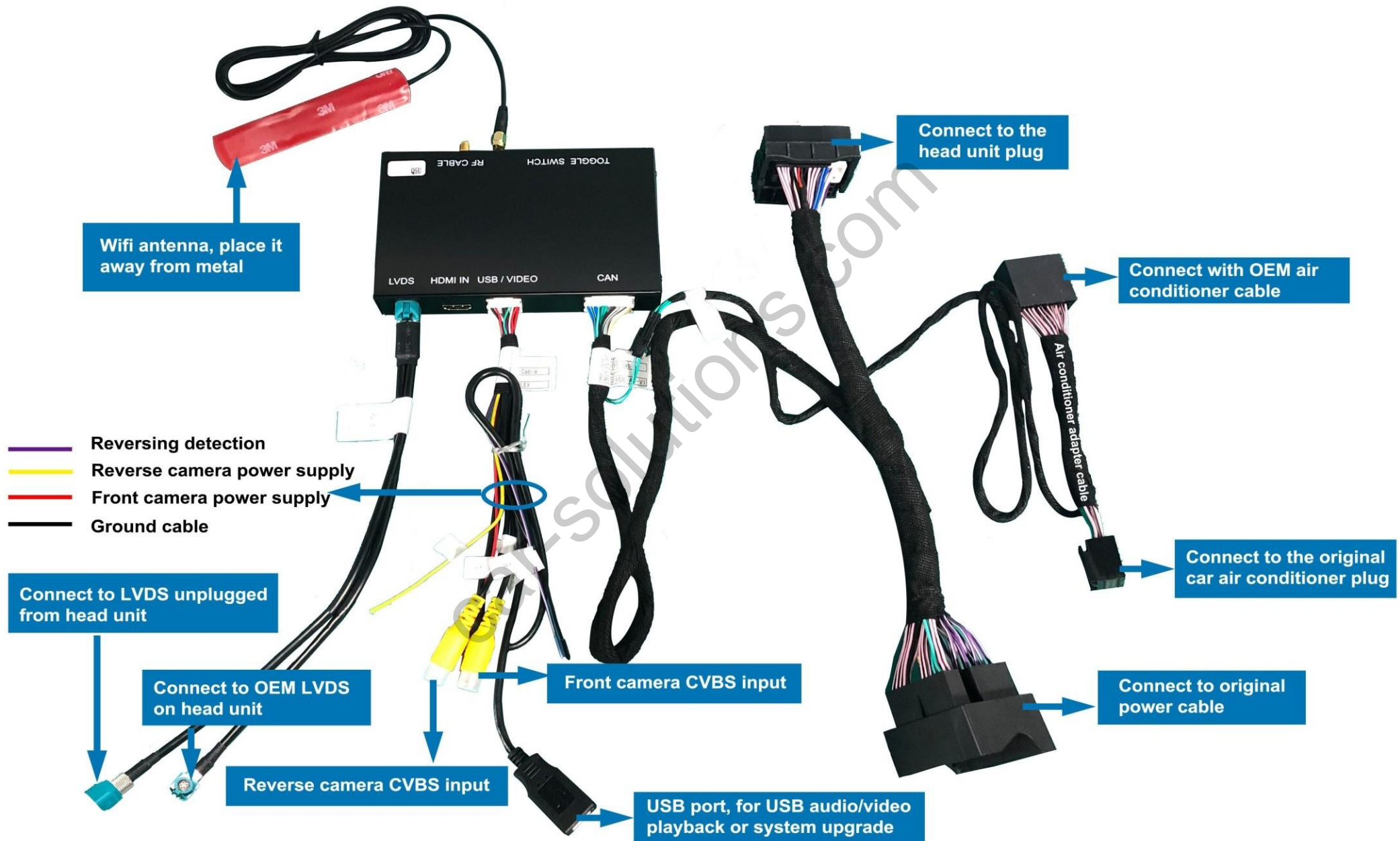
Connection for Q3 with navi



Carplay connection for A6/A7



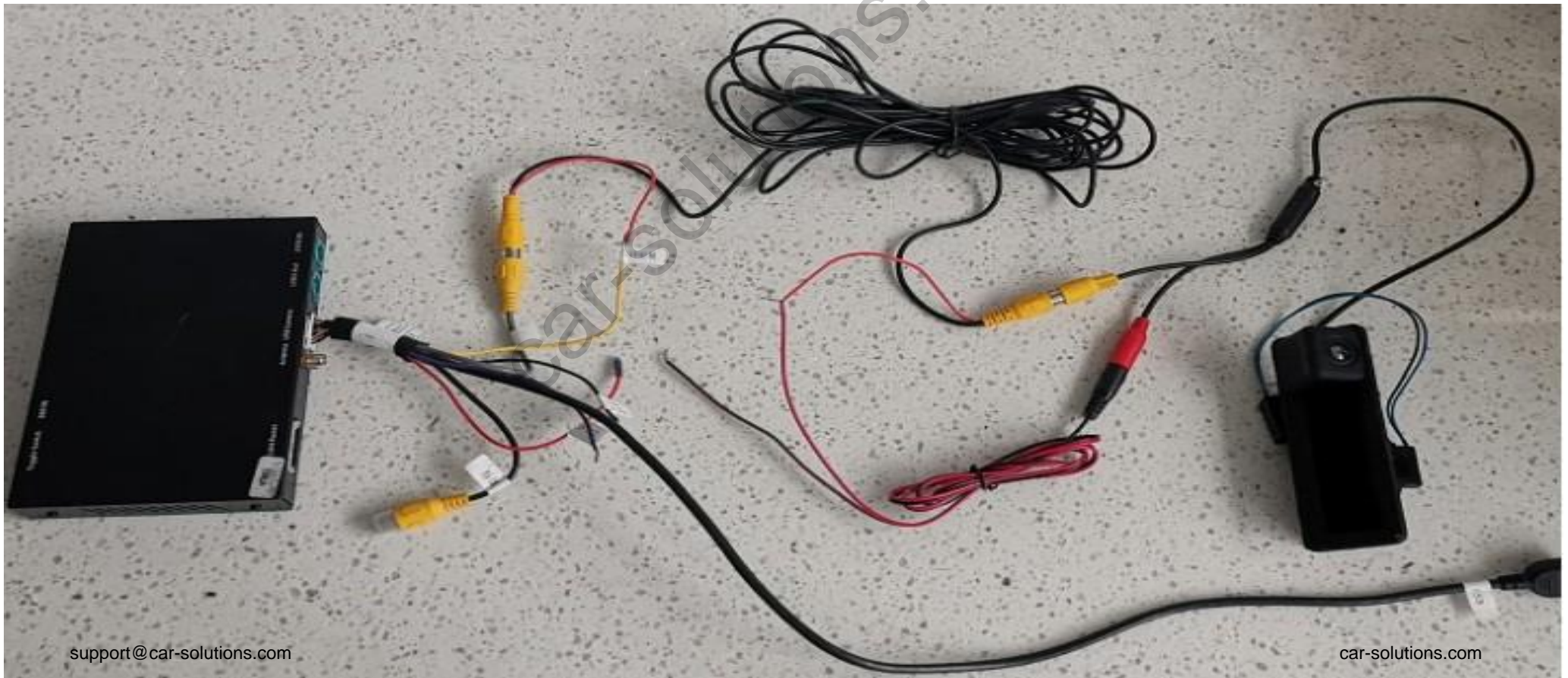
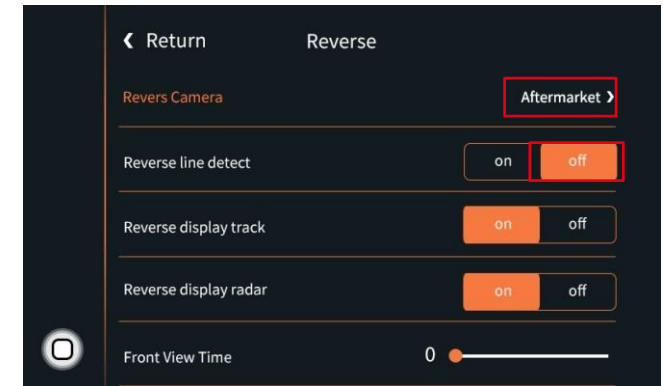
Carplay connection for A8



Reverse camera wiring connection and settings

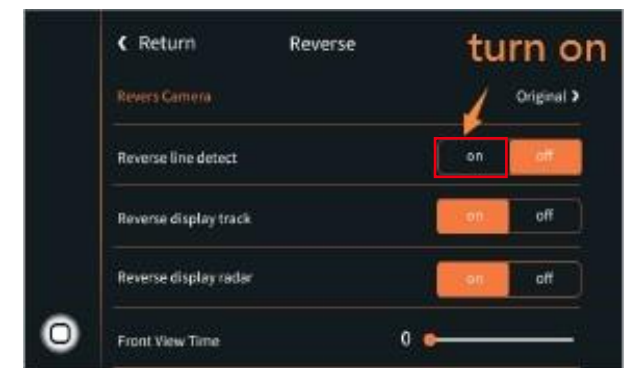
Automatic transmission

1. Connect the reverse camera to CVBS OUT labeled 'Reverse camera'
2. Connect the cable labeled '12V reverse camera(yellow)' to camera power
3. Setting → Reverse → Reverse camera → Aftermarket



Munal transmission

1. Connect the reverse camera to CVBS OUT labeled 'Reverse camera'
2. Setting → Reverse → Reverse camera → Aftermarket



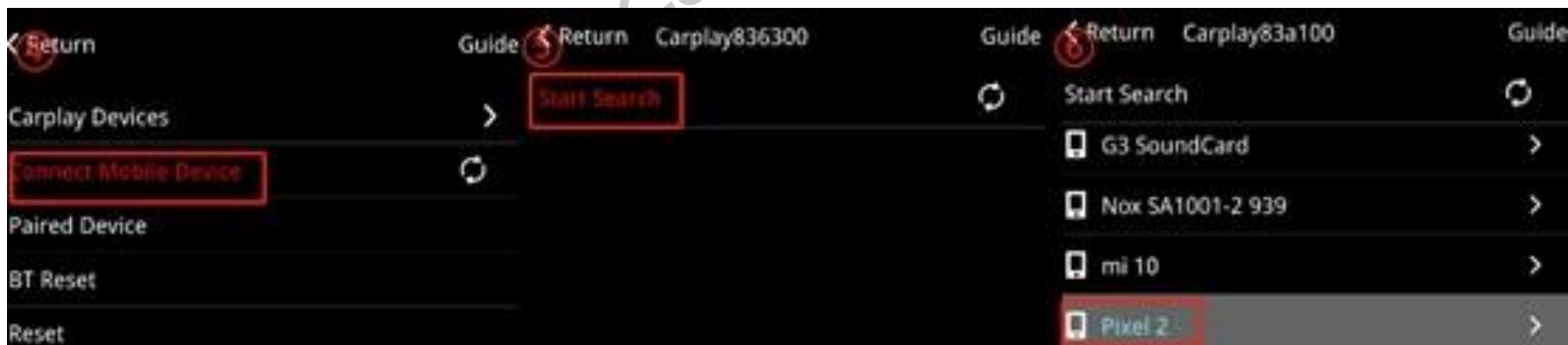
Wireless carplay connection

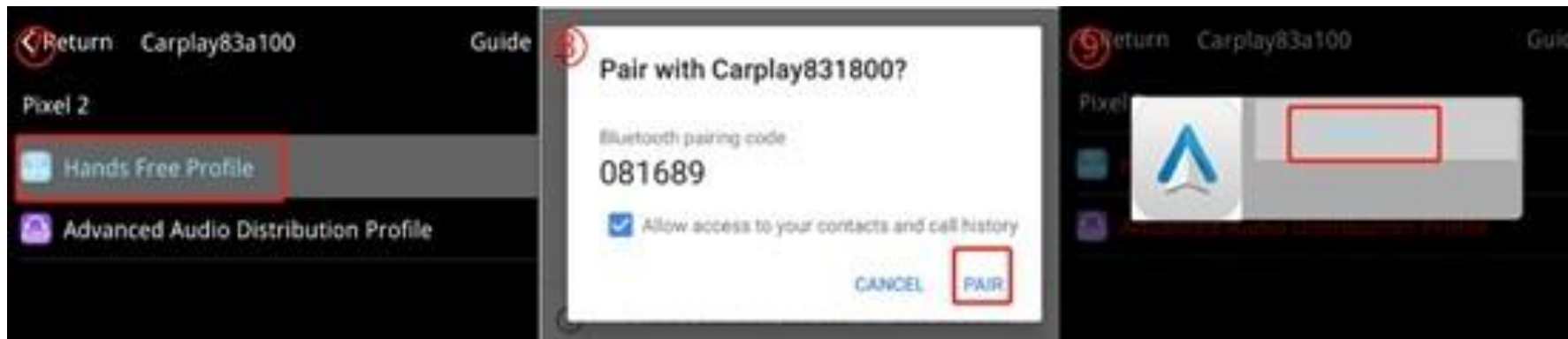
1. Turn on WIFI (Fig.1)
2. Turn on Bluetooth (Fig.2), and connect Carplay's bluetooth (Fig.3/4)
3. After the bluetooth connection is completed, the following prompts will pop up, click 'Allow-Use carplay' (Fig.5/6)



Wireless Android auto connection

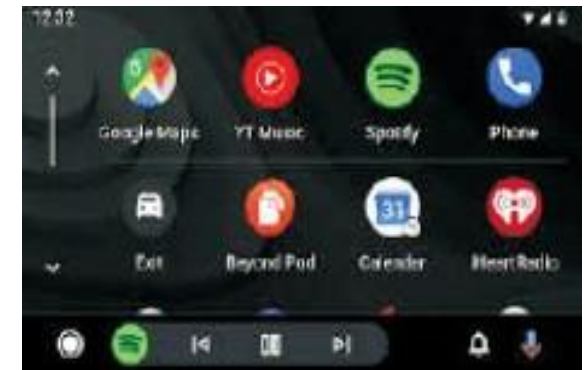
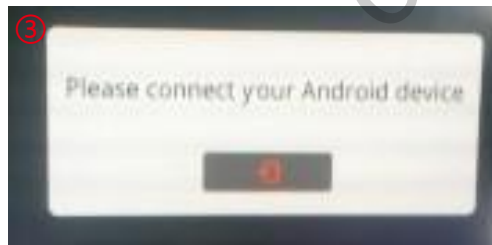
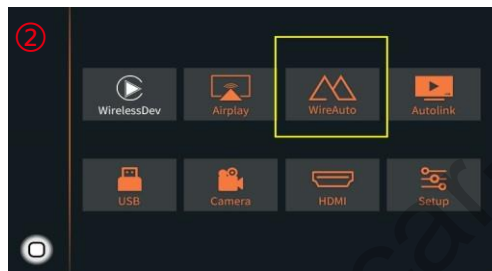
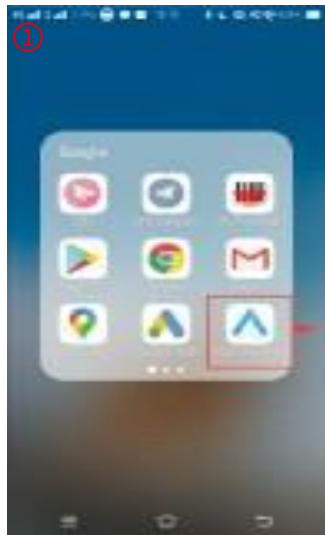
1. Turn on WIFI (Fig.1)
2. Turn on Bluetooth (Fig.2)
3. Enter the Wireless Dev APP(Fig.3)
4. Search the bluetooth of phone(Fig.4 / 5 /6)
5. Choose any one of the options on the car end to pair(Fig.7)
6. The pairing request pops up on the phone, select 'pair' (Fig.8/9)





Wired Android auto connection

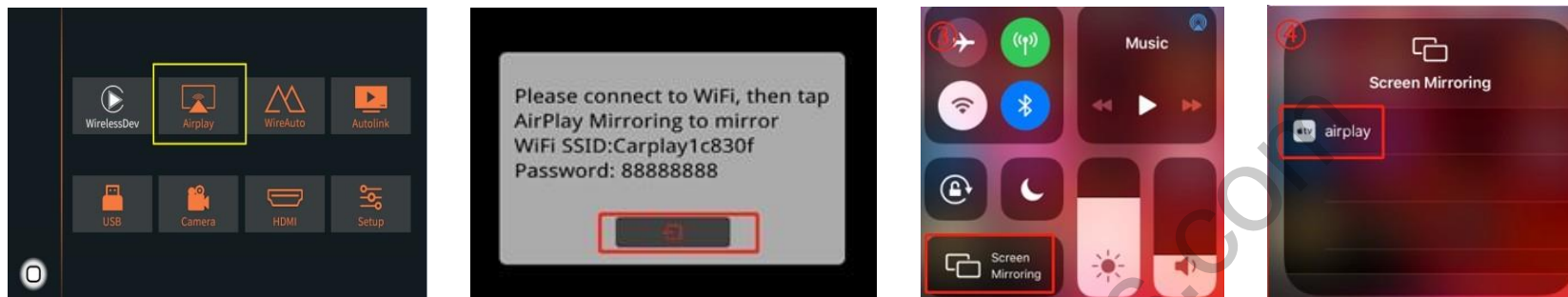
1. Download Android auto APP on Android phone(Fig.1).
- 2.. Click 'WireAuto' icon(Fig.2), the prompt 'Please connect your Android device' will pop up(Fig.3).
3. Plug your phone to USB port. then it will enter Android auto automatically(Fig.4).



Wireless Airplay connection

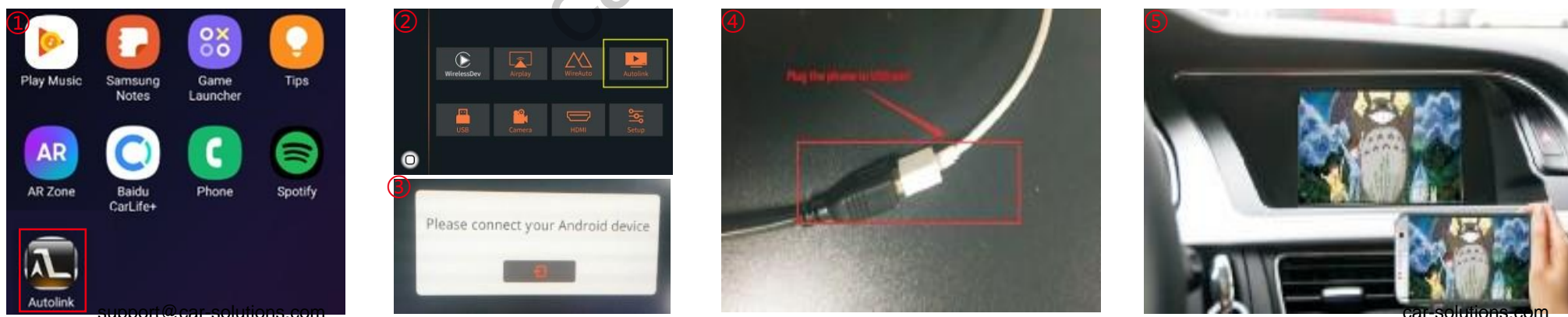
1. Click 'Airplay' icon first (Fig.1), the pairing information with the phone will be displayed (Fig.2)
2. Search wifi signal of Airplay and connect
3. Turn on Airplay (Fig3/4)

Note: If you have connected Carplay before, please disconnect Carplay wifi first.



Wired Autolink connection

1. Download Android auto APP on your Android phone and turn on all the prompt permissions of this APP (Fig.1).
2. Click 'Autolink' icon (Fig.2), the prompt 'Please connect your Android device' will pop up (Fig.3).
3. Plug your phone to USB port (Fig.4). It will enter Android auto automatically (Fig.5).



Activation by original buttons



Audi A6 3G MMI Controller



Button	Function	Operation	Remarks
1 NAV	Changing Modes	Press the button 3 seconds	Order : OEM → Carplay
		Press the button short time	Return to the OEM mode in any modes.
2 Dial	Move the pointer	Turn the dial	Apple Car Play Function
Touch Pad	Move the pointer Up,Down	Touch the pad	Google Android Auto
			Google Android Auto
3 Back	Go back	Press the button	Apple Car Play Function
4 Voice	"Siri" "Google Assistant"	Press the button 3 seconds	Google Android Auto
			Google Android Auto



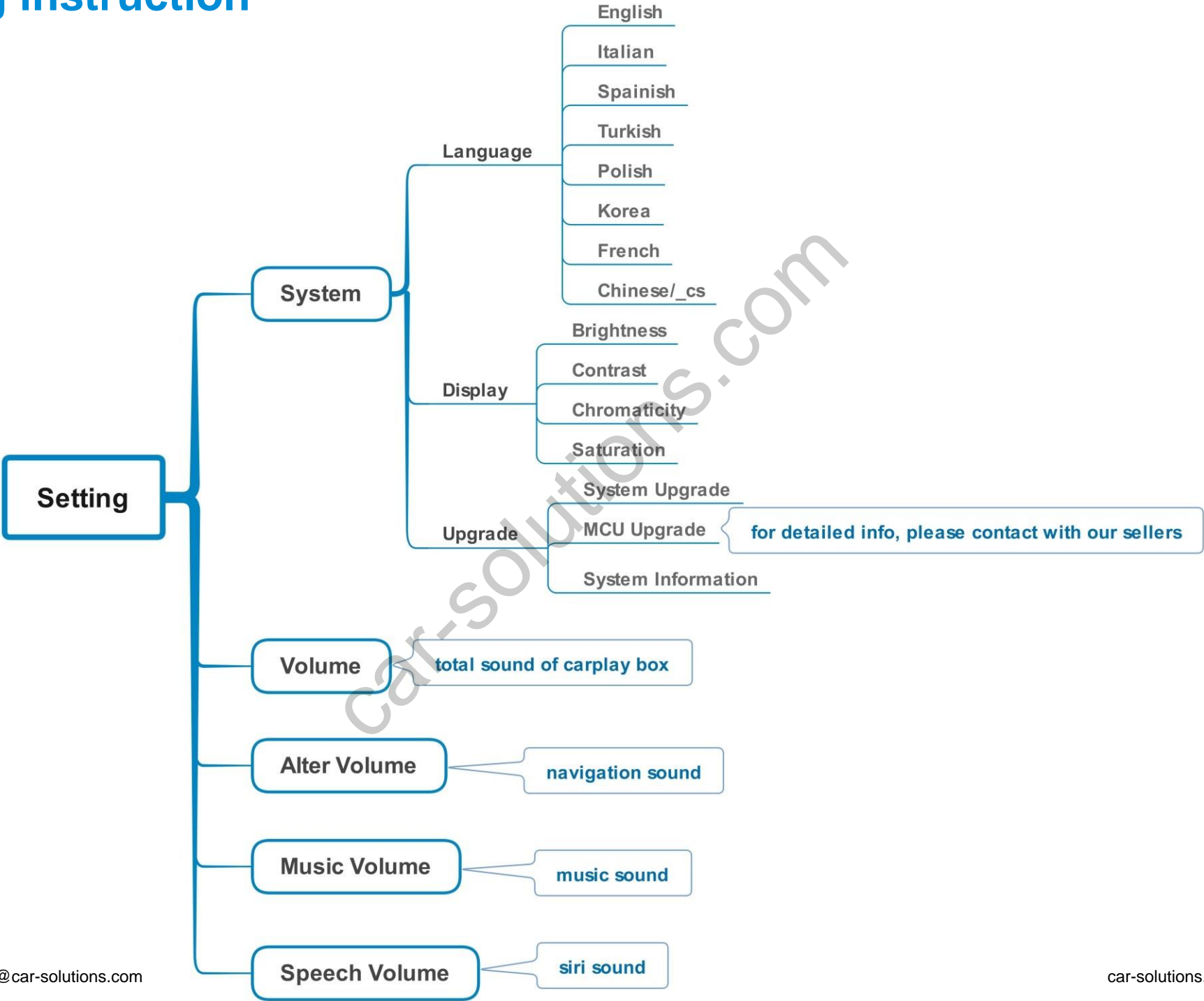
Audi A4 3G MMI Controller

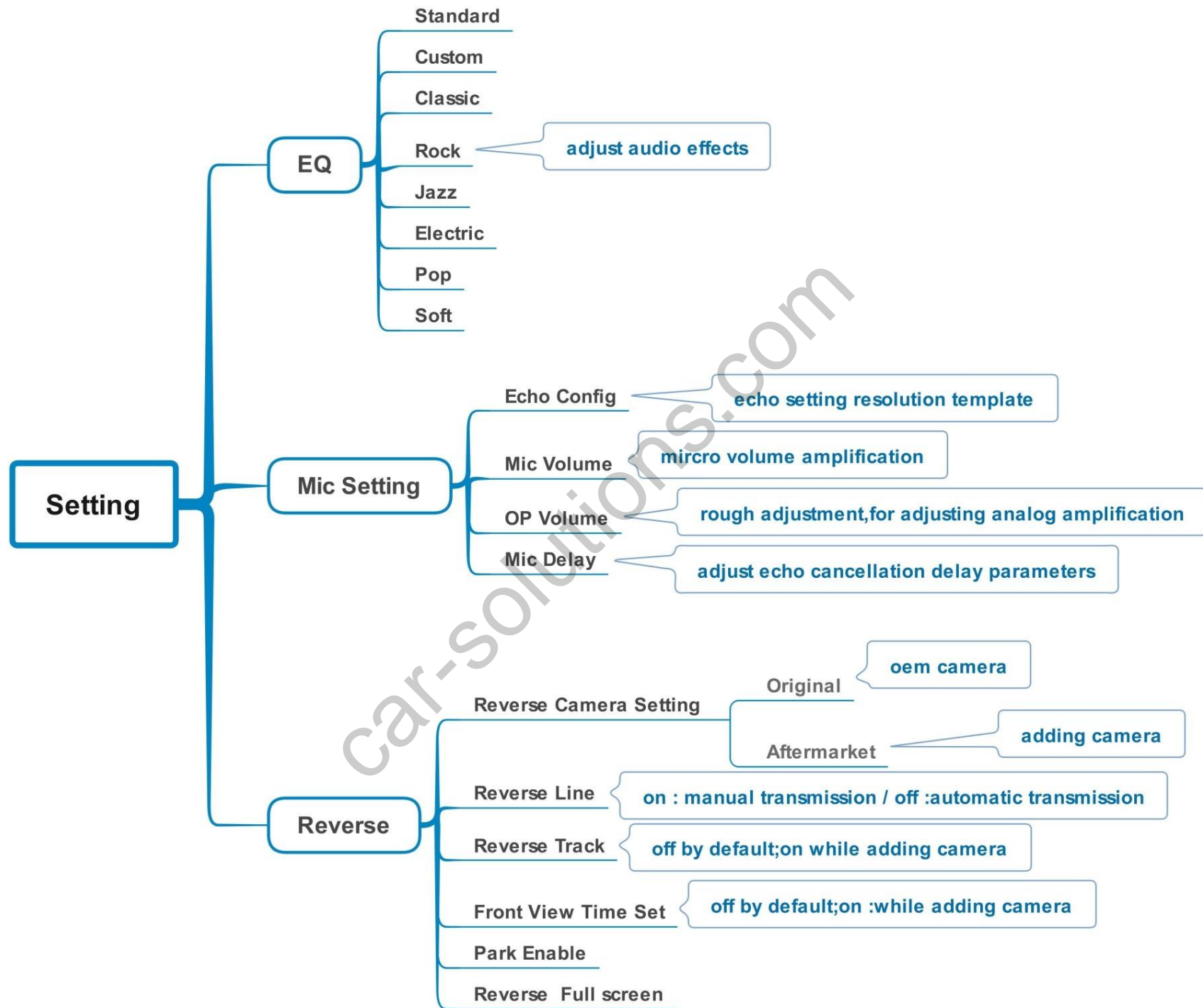


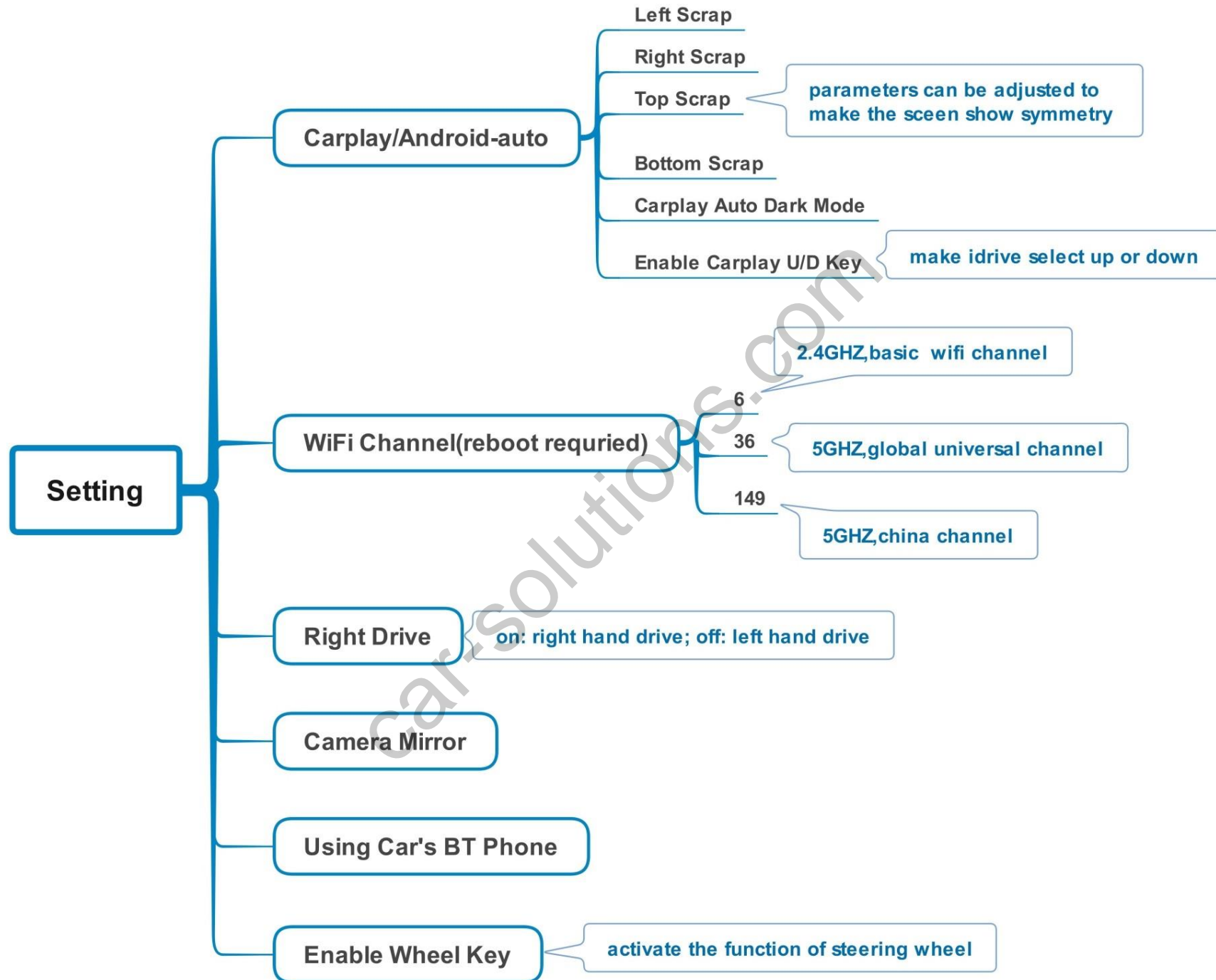
Tip: car models with different switch definition

- Q5 high config, Q7, A6, A8: NAV button
- Q5 low config: NAV/CAR/MEDIA/INFO button
- A3 B9 Q3: MEDIA button

Setting instruction







FAQ

1. Q: What need to be paid attention to during installation?

- A: 1) Make sure that the carplay box is compatible with the installed model, and check whether the label of box matches with the car model
- 2) Power off during installation
- 3) After the installation is complete, it is best to lock the car for a few minutes to turn it on, wait until the running test is normal, then restore the car

2. Q: While switching to carplay, the screen displays no signal, abnormal screen or no response?

- A: 1) Check whether the wiring is connected according to the wiring diagram
- 2) Check if the pins of the lvds cable ports are bent or not in contact, please re-plug it
- 3) Check whether the dip switch code is correct, Power off when changing the dip code
- 4) If the dip switch code and wiring connection are normal after confirming, box still switches to the black screen, contact after-sales service to solve

3. Q: I don't have sound when I connect carplay, what can I do?

- A: 1) if your car has AUX function, set on OEM system
- 2) if no AUX on the car, please connect AMI-to-AUX cable to get sound



Connect with AMI port from armrest box



Hanging, No need connect

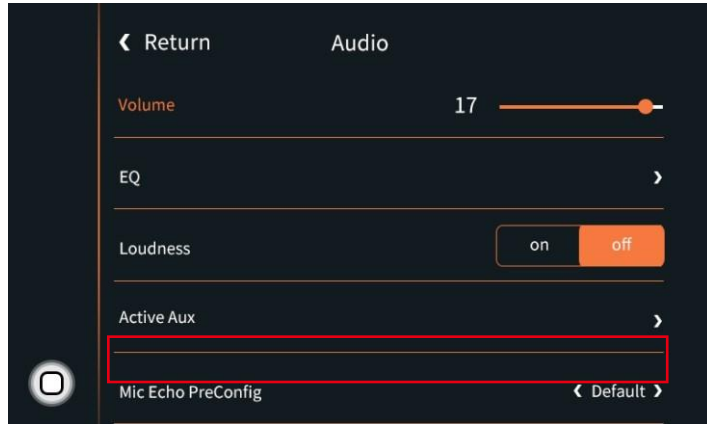
car-solutions.com

4. Q: When I call someone, he can hear himself, how to do?

A: Solution1

1) There are 4 default options available(Fig.1)

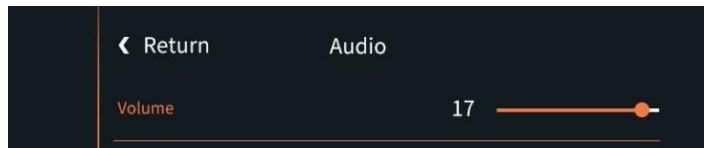
2) Try one by one,after changing the setting, restart to take effect



A: Solution2

1) Adjust the volume of the original car to normal use

2) Turn the volume in 'audio' setting to 13(Fig.2)



3) Turn the 'Microphone Volume' to 12

4) 'Microphone OP' tune from 0 until no echo is heard

5) Adjust 'AEC quality' to 2

6) If the caller hears the echo interval for a long time, fine-tune the 'Microphone delay'

7) If the caller hears a small voice, you can fine-tune the 'Microphone Volume' and 'Microphone PGA'

support@car-solutions.com

car-solutions.com

5. Q: Solutions to not being able to connect with carplay?

A: 1) Click on carplay bluetooth or wifi on the mobile phone

2) At the same time, clear the Bluetooth devices on the mobile phone and the car, and then pair and connect

3) Go to WirelessDev to reset the Bluetooth, and then pair and (Fig.1)

4) Restore the mobile network to the mobile phone

5) Check whether the carplay on the mobile phone is turned on (Fig.2)

6) Siri permissions are all turned on(Fig.3)

7) If necessary, check the antenna (whether it is broken, or attached to the metal, stay away from the box)



6. Q: can I connect wireless Android auto with my huawei mate 20?

A: The following phone models support wireless Android auto and the Android phone with Android 11 are all supported.

Phone Make and Model	Android Version
Pixel 3 or Pixel 3 XL	Android 8.0 or higher
Pixel 4 or Pixel 4 XL	Android 10.0 or higher
Samsung Galaxy S8 or S8+	Android 9.0 or higher
Samsung Galaxy S9 or S9+	Android 9.0 or higher
Samsung Galaxy S10 or S10+	Android 9.0 or higher
Samsung Note 8, Note 9 and Note 10	Android 9.0 or higher
Other Samsung models	Android 10.0 or higher

7. Q: I install the carplay, but the button on steering wheel can't work?

A: 1) Set the setting 'Enable wheel key' to ON

2) Short press the voice button or long press 5s the ok button on idrive knob to activate siri



8. Q: Siri function can not be used

A: 1) Check whether has turned the siri access permissions on iphone, turn all the options on

2) Turn the function of steering wheel on in carplay switch page setup

3) If can activate the Siri but Siri cant receive the command, please check whether the mic works first, if no problem with mic, check the Bluetooth of iphone, disconnect it from original car bluetooth

support@car-solutions.com

car-solutions.com